

Seniors' Fall Injuries in Alberta



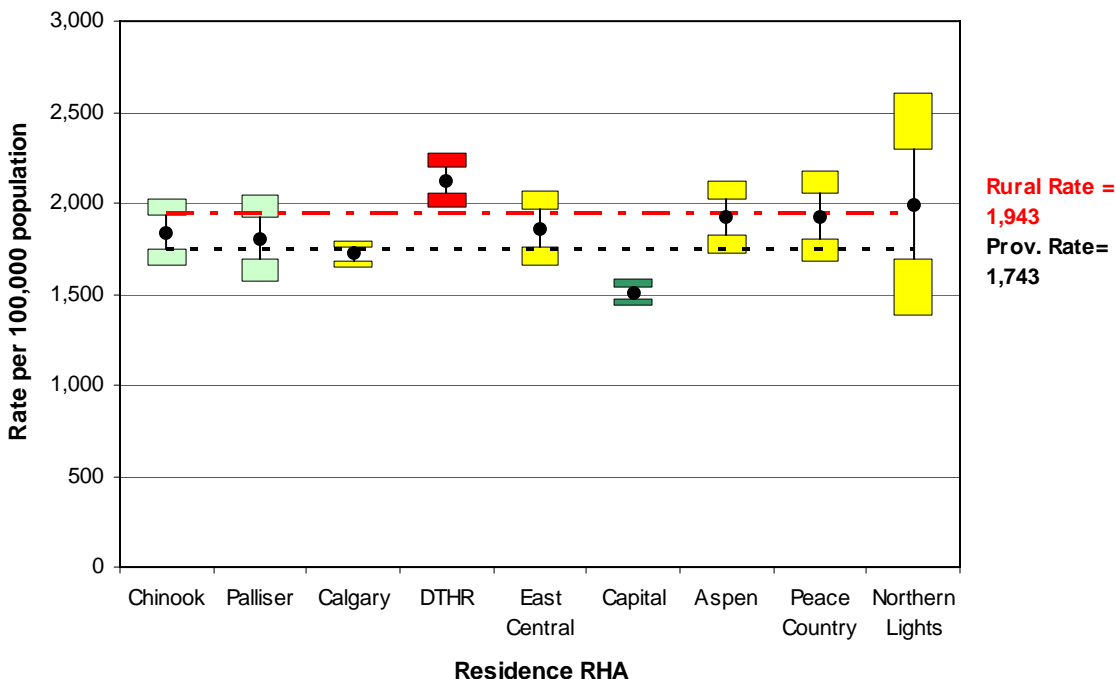
Comparisons used in the color scheme; Capital and Calgary Health Regions are compared with the provincial rate, whereas all other regions are compared with the rural rate.

Hospital Admission Rates Alberta, 2006

In 2006, RHA 4 had fall-related hospital admission rate of 2,126 admissions per 100,000 population which was much higher than the rural rate of 1,943 admissions per 100,000 population.

RHA 6 had a fall-related hospital admission rate of 1,506 admissions per 100,000 population which was much lower than the provincial rate of 1,743 admissions per 100,000 population.

Region	# Admissions	Rate per 100,000 pop
Chinook	488	1,840
Palliser	284	1,805
Calgary	2,216	1,720
DTHR	883	2,126
East Central	408	1,861
Capital	1,951	1,506
Aspen	396	1,921
Peace Country	252	1,926
Northern Lights	37	1,993
Province	6,915	1,743
Rural	2,748	1,943

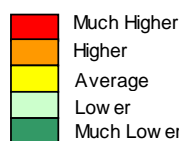
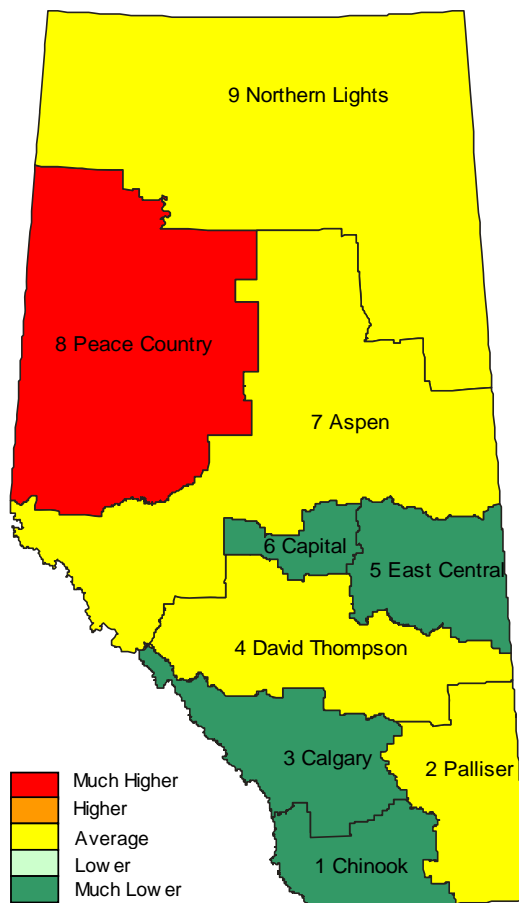


Emergency Department Visit Rates Alberta, 2006

In 2006, RHA 8 had fall-related emergency department visit rate of 7,461 visits per 100,000 population which was much higher than the rural rate of 6,008 visits per 100,000 population.

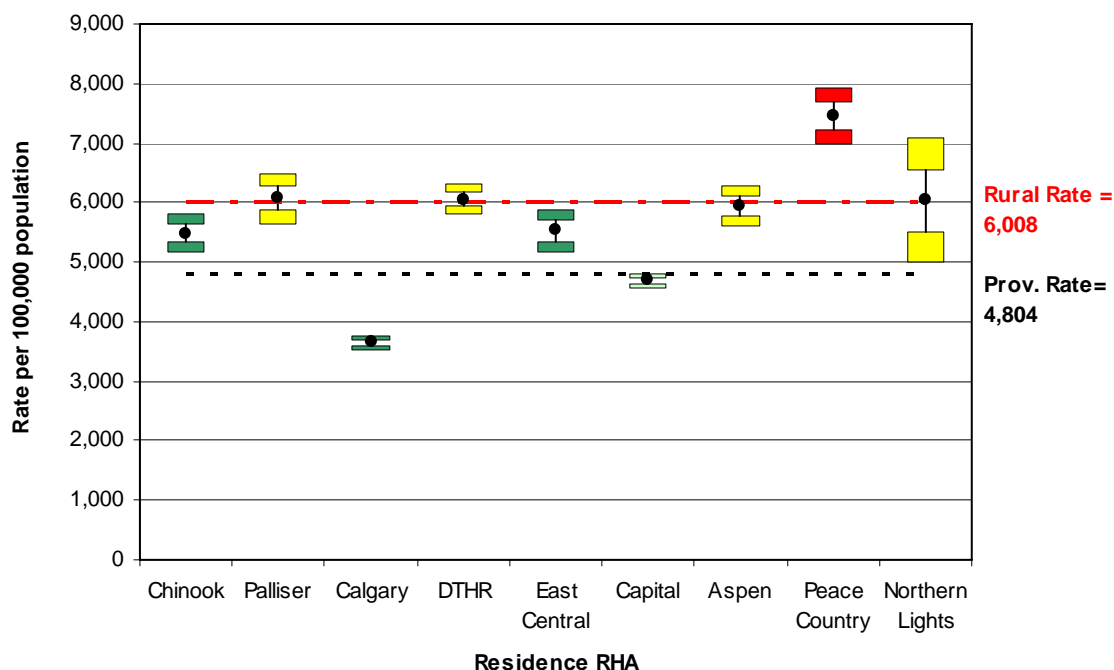
RHAs 1, and 5 had fall-related emergency department visit rates of 5,489 visits per 100,000 population and 5,529 visits per 100,000 population respectively. These rates were much lower than the rural rate of 6,008 visits per 100,000 population.

RHAs 3 and 6 had fall-related emergency department visit rates of 3,648 visits per 100,000 population and 4,687 visits per 100,000 population respectively. These rates were much lower than the provincial rate of 4,804 visits per 100,000 population.



Comparisons used in the color scheme; Capital and Calgary Health Regions are compared with the provincial rate, whereas all other regions are compared with the rural rate.

Region	# Emerg Visits	Rate per 100,000 pop
Chinook	1,365	5,489
Palliser	908	6,072
Calgary	4,574	3,648
DTHR	2,425	6,058
East Central	1,130	5,529
Capital	5,869	4,687
Aspen	1,190	5,941
Peace Country	956	7,461
Northern Lights	117	6,036
Province	18,534	4,804
Rural	8,091	6,008



Residence RHA



Source: Alberta Centre for Injury Control & Research. Injury database October 2008. Unpublished. Data available on request.

