

Take the  
child safety seat

**YES**  
test  
forward facing

Just being smart...

- My child rides in the child safety seat for every trip.
- My child will be in a forward-facing child safety seat until he/she weighs 40 lb (18 kg).
- I have checked for any recalls on my child's safety seat. Recall information is available from Transport Canada at 1-800-333-0510 or at [www.tc.gc.ca/roadsafety](http://www.tc.gc.ca/roadsafety) (click on Child Safety).
- Once my child weighs more than 40 lb (18 kg), he/she will move to a booster seat.



If you are unable to answer "YES" to any of the statements, be sure you consult the instruction manual for your child safety seat as well as your vehicle owner's manual.

For more information contact:  
In Calgary, Calgary Health Link at  
**(403) 943-LINK (5465)**  
In Edmonton, Capital Health Link at  
**(780) 408-LINK (5465)**  
Toll-free in Alberta  
**1-866-408-LINK (5465)** OR  
Alberta Transportation **(780) 427-8901**  
Toll-Free in Alberta **310-0000**  
or visit [www.saferoads.com](http://www.saferoads.com)

Take the  
**child safety seat**

**YES**

test

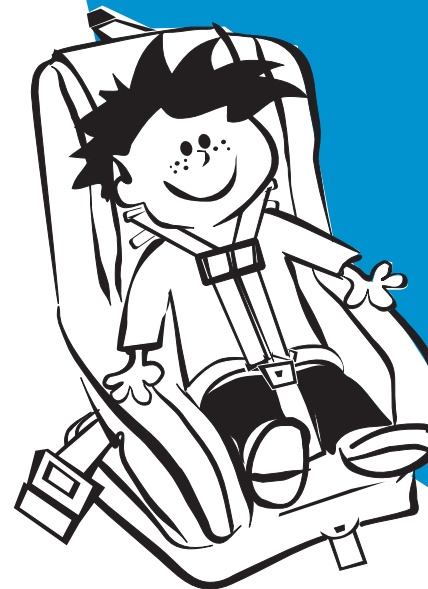
**forward-facing**



Using a child safety seat properly can reduce the likelihood of your child being injured or killed in a crash by as much as 75%.

Infants and children rely on their parents and caregivers to make every ride a safe ride, and you can do it! Inside is a list of questions that will help you install the child seat safely in your vehicle and buckle your child up the right way each time.

Take the "YES" test as you are looking at your child's safety seat in your vehicle. Push, pull and poke the seat until you can check off each item that applies to your child's safety seat.



## forward-facing



### Getting ready...

- I have read the child safety seat instruction booklet for the exact installation instructions.
- I have read my vehicle owner's manual on how to install a child safety seat.
- My child's safety seat is Canadian-approved and has a CMVSS label.
- My child's weight and height are within the limits for the child safety seat I am using.
- My child's safety seat is in the back seat of the vehicle, facing the front.

### Securing the child safety seat...

There are two steps to install a forward-facing child safety seat in your vehicle:

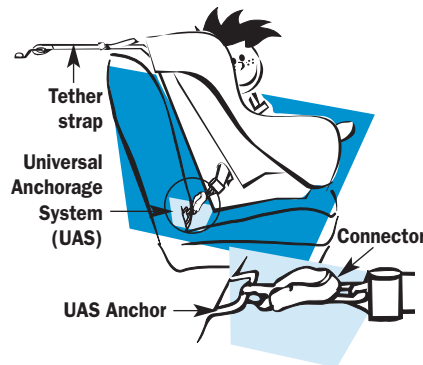
#### Step 1

### Secure the bottom of the child safety seat...

#### Either...

##### I have a Universal Anchorage System (UAS) in my vehicle.

- I have checked the owner's manual on how to use the UAS locations in my vehicle.
- I have connected the child safety seat to the UAS anchors in my vehicle.
- I have pulled the UAS belt tight.



### Or...

#### I am using the seat belt to secure the child safety seat.

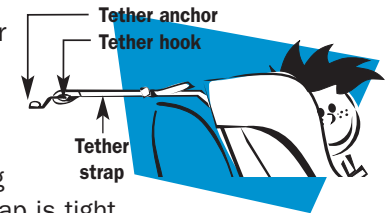
- I have checked the owner's manual on how to lock the seat belt for use with a child safety seat in my vehicle.
- The seat belt is routed through the forward-facing belt path on the car seat and buckled up.
- The seat belt is tight because I have put my knee in the child safety seat, pushed down and removed all the slack from the lap portion of the seat belt.
- I have tested the belt to see that it has "locked" in place and will not slip. If the seat belt slips, I have used a locking clip.



#### Step 2

### Always use the tether strap...

- My vehicle came with a tether anchor or I had a tether anchor installed at the vehicle dealer.
- The tether strap is hooked to the tether anchor in my vehicle according to the instructions and the tether strap is tight.
- The child safety seat moves **less than 1 inch (2.5 cm)** in any direction.



### Buckling your child in the safety seat...

- The shoulder harness is threaded through the correct slot, according to the instructions.
- The chest clip is positioned at the level of my child's armpits.
- The harness is snug when I pull on it. I can only fit one finger between the harness and my child's collar bone.

