



Just being smart...

- My baby rides in the child safety seat for every trip.
- The child safety seat's carrying handle is down or in the travel position when the vehicle is moving.
- I have checked for any recalls on my child's safety seat. Recall information is available from Transport Canada at 1-800-333-0510 or at www.tc.gc.ca/roadsafety (click on Child Safety).
- My baby will be seated rear-facing in a child safety seat appropriate for his/her weight and height until at least one year of age **and** 20 lb (9 kg).



If you are unable to answer "YES" to any of the statements, be sure you consult the instruction manual for your child safety seat as well as your vehicle owner's manual.

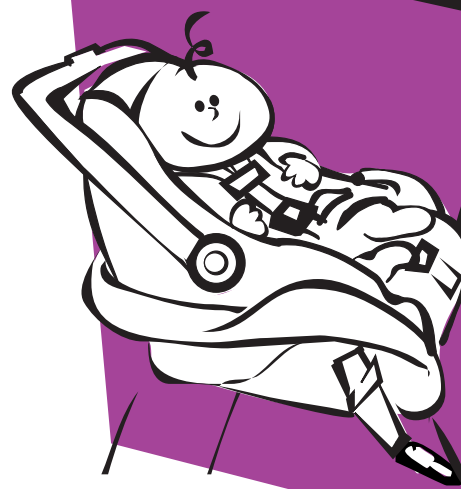
For more information contact:
In Calgary, Calgary Health Link at **(403) 943-LINK (5465)**
In Edmonton, Capital Health Link at **(780) 408-LINK (5465)**
Toll-free in Alberta **1-866-408-LINK (5465)** OR
Alberta Transportation **(780) 427-8901**
Toll-Free in Alberta **310-0000**
or visit www.saferoads.com

Take the child safety seat

YES

test

rear-facing



Using a child safety seat properly can reduce the likelihood of your child being injured or killed in a crash by as much as 75%.

Infants rely on their parents and caregivers to make every ride a safe ride, and you can do it! Inside is a list of questions that will help you install the child safety seat safely in your vehicle, and buckle your baby up the right way each time.

Take the "YES" test as you are looking at your baby's safety seat in your vehicle. Push, pull and poke the seat until you can check off each item that applies to your baby's safety seat.

rear-facing



Getting ready...

- I have read the child safety seat instruction booklet for the exact installation instructions.
- I have read my vehicle owner's manual on how to install a child safety seat.
- I never place my child's safety seat in front of an airbag.
- My child's safety seat is Canadian-approved and has a CMVSS label.
- My baby's weight and height are within the limits for her/his child safety seat.
- The child safety seat is in the back seat of the vehicle.
- The child safety seat is facing the rear of the vehicle.

Securing the child safety seat...

There are two systems that can be used to secure the child safety seat.

Either...

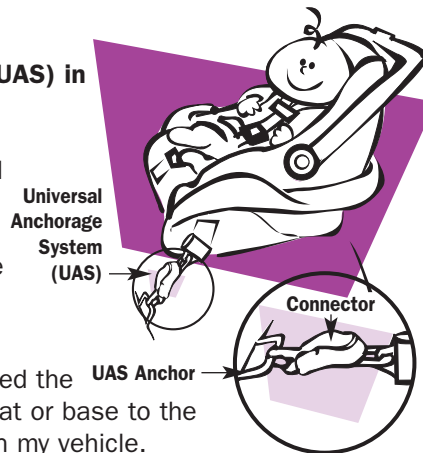
- I have a **Universal Anchorage System (UAS)** in my vehicle.

- I have checked the owner's manual on how to use the UAS locations in my vehicle.

- I have connected the **UAS Anchor** child safety seat or base to the UAS anchors in my vehicle.

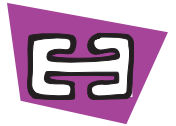
- I have pulled the UAS belt tight.

- The child safety seat moves **less than 1 inch (2.5 cm)** in any direction.



Or...

- I am using the seat belt to secure the child safety seat.
- I have checked the owner's manual on how to lock the seat belt for use with a child safety seat in my vehicle.
- The seat belt is routed through the rear-facing belt path on the child safety seat or base and is buckled up.
- The seat belt is tight because I have pushed down on the child safety seat or base and removed all the slack from the lap portion of the seat belt.
- I have tested the belt to see that it has "locked" in place and will not slip. If the seat belt slips, I have used a locking clip.
- The child safety seat moves **less than 1 inch (2.5 cm)** in any direction.



Locking Clip

Buckling your baby in the safety seat...

- The shoulder harness is threaded through the correct slot according to the child safety seat instructions.
- The chest clip is positioned at the level of my child's armpits.
- The shoulder harness does not slip off my child's shoulders.
- The harness is snug. I can only fit one finger between the harness and my child's collar bone.
- The shoulder harness system stays snug when I pull on it.

